

GENERAL NOTES

- THIS BOOKLET OF GENERAL PLANS WAS DEVELOPED UNDER TAR SSI-021(02) BASED ON A SHIPCHECK CONDUCTED AT CASCADE GENERAL, INC. IN PORTLAND, OREGON ON OCTOBER 28-30, 2002, FOLLOWING THE DEMILITARIZATION AND CONVERSION OF THE EX-USNV AGATE PASS (YTT-12) TO A NOAA RESEARCH VESSEL.
- THIS DRAWING SUPERSEDES REFERENCES NO. 1, 2, 3, AND 4.

LIST OF ABBREVIATIONS

BHD	BULKHEAD
BU	BUREAU
CG	CLEANING GEAR
CONT	CONTROLLER
DC	DAMAGE CONTROL
DF	DRINKING FOUNTAIN
DO	DIESEL OIL
ENCAP	ENCAPSULATED
EM	EXPANDED METAL
FC	FILE CABINET
FCU	FAN COIL UNIT
FO	FUEL OIL
FRZR	FREEZER
FS	FIRE STATION
FW	FRESH WATER
FXD	FIXED
GEN	GENERATOR
H	HATCH
LAV	LAVATORY
LKR	LOCKER
MSD	MARINE SANITATION DEVICE
NT	NON-TIGHT
PP	PUMP
REFER	REFRIGERATOR
REFRD	REFRIGERATED
SH	SHOWER
SR	STATEROOM
SPLY	SUPPLY
SWBD	SWITCHBOARD
TBL	TABLE
TK	TANK
V	VENT
VL	VERTICAL LADDER
WC	WATER CLOSET
WDO	WINDOW
WT	WATERTIGHT
WTD	WATERTIGHT DOOR
XDCR	TRANSDUCER
XFMR	TRANSFORMER

REVISIONS

REV	SHT	ZONE	ITEM	DESCRIPTION	DATE	APPD
A	2	10-B	1	ADDED VESSEL CALL LETTERS	1/31/03	RJH
	2	10-C	2	MODIFIED VESSEL COMPLEMENT		
	7	55-B	3	MODIFIED BRIDGE CONSOLE		
B	3	20-C	1	ADDED 02 HOUSE & 01 DECK EXTENSION	3/11/06	BECl
	4	29-C	2	ADDED 02 HOUSE & 01 DECK EXTENSION		
	5	42-C	3	MOD STOREROOM 2-7-4-A		
	6	49-C	4	ADDED 02 HOUSE & 01 DECK EXTENSION		
	7	55-A 59-B 60-D	5	ADDED 02 HOUSE & 03 DECK EXTENSION & 01 DECK EXTENSION		
C	ALL	-	1	GENERAL REVISION AND UPDATE	8/18/06	BECl

REFERENCES

NO	TITLE	DRAWING NO
1	YTT 9 CLASS, GENERAL ARRANGEMENTS - HOLD PLAN	801-6500933
2	YTT 9 CLASS, INBOARD PROFILE	5777-005
3	YTT 9 CLASS, OUTBOARD PROFILE	801-6500930
4	YTT 9 CLASS, GENERAL ARRANGEMENTS - DECKS	801-6500934

7	FOC'SLE DECK, 02 LEVEL AND BRIDGE
6	MAIN DECK
5	HOLD LEVEL
4	INBOARD PROFILE
3	OUTBOARD PROFILE
2	GENERAL DATA
1	COVER SHEET

INDEX

NATIONAL OCEANIC AND ATMOSPHERIC ADMINISTRATION
OFFICE OF MARINE & AVIATION OPERATIONS

Seaworthy Systems, Inc.
P.O. BOX 905
BOSTON, CT 06428
TEL: (860) 787-2081

NOAA SHIP NANCY FOSTER

CONTRACT #
50-ABNA-0-00032
TAR-SSI-021-(02)

DSGN - / - / - -

DWN - 12/03/02
JEK

CHK - 12/03/02
DAR

CHK - - / - / - -

BOOKLET OF GENERAL PLANS

SIZE	CAGE CODE	NOAA DRAWING NUMBER	REV
D	OYLJ5	NF-085-001	C

SCALE: AS SHOWN CAD FILENAME NF085001-1A SHT 1 OF 7

16

15

14

13

12

11

10

9

D

D

DECK MACHINERY

TYPE	MANUFACTURER	PULL\CAPACITY	QTY
-	-	-	-
COM 15 WINCH	MARKEY	-	1
CT WINCH	ALLIED SYSTEMS	-	1
J-FRAME	-	-	1
A-FRAME	APPLETON MARINE	25,000 LBS	1
AFT CRANE	GOODCRANE.COM	10,000 LBS @ 40ft	1

HABITABILITY

SINGLE STATEROOM	2
DOUBLE STATEROOM	11
FOUR BUNK ROOMS	4
TOTAL BUNKS ABOARD	40
MESS	---

GENERAL CHARACTERISTICS

LENGTH OVERALL	186'-6"
LENGTH BETWEEN PERPENDICULARS	176'-7 7/8"
BEAM (MOLDED)	40'-0"
DEPTH TO MAIN DECK (MOLDED)	16'-0"
DESIGN DRAFT	10'-6"
MOLDED DISPLACEMENT (S.W.)	1182.37 L.TONS
FRAME SPACING	24"

ENGINEERING

TYPE	MANUFACTURER	PULL/CAPACITY	QTY
MAIN PROPULSION (GEARED DIESEL)	CUMMINS	1250 BHP/1800 RPM	1
BOW THRUSTER (ELECTRIC)	OMNITHRUSTER	400 HP	1
Z-DRIVE UNIT	ULSTEIN	300 HP	2
SHIP'S SERVICE GENERATORS (450 VAC)	CUMMINS	395 KW	3
EMERGENCY GENERATOR (450 VAC)	CUMMINS	100 KW	1

SCIENTIFIC LABORATORY FACILITIES

WET LAB	440 Sq Ft
DRY LAB	295 Sq Ft

COMPLEMENT

OFFICERS	5
CREW	14
SCIENTISTS	17

FRESHWATER SYSTEM

EVAPORATOR (ALFA-LAVAL)	1
TYPE	JWP-16-C40
CAPACITY	7 CU. METERS/DAY

LAUNCHES & SMALL BOATS

TYPE	PROPULSION	LENGTH	QTY
RHIB (AMBAR AM550)	OUTBOARD MOTOR	18.67 FEET	1

SEWAGE WASTE CONTROL

SYSTEM TYPE	CHT WITH MSD
MANUFACTURER	OMNIPURE 12MC
HOLDING CAPACITY	7,500 GALS

GENERAL INFORMATION

LAUNCHED	SEPTEMBER 1990
DELIVERED	JULY 1991
CONVERTED	DECEMBER 2002
CALL LETTERS	CASCADE GENERAL INC., PORTLAND, OR
BUILDER	WATER McDERMOTT SHIPYARDS INC. AMELIA, LA
HOMEPORT	CHARLESTON, SC
HULL	WELDED STEEL

ELECTRONICS

COMMUNICATIONS

VHF/FM TRANSCEIVERS
HF TRANSCEIVERS
EMERGENCY RADIO AUTOALARM
PORTABLE EMERGENCY TRANSCEIVER
EPIRB'S

ACOUSTICS

ACOUSTIC DOPPLER CURRENT PROFILER (ADCP)
MULTIBEAM ECHO SOUNDER (EM1002)
VERTICAL FISH FINDER
DOPPLER SPEED LOG

NAVIGATION

RADAR
GYROCOMPASS
GMDSS
SATNAV

SCIENTIFIC EQUIPMENT

XBT SYSTEM
SHIPBOARD ENVIRONMENTAL
ACQUISITION SYSTEM (SEAS)
UNCONTAMINATED SALT WATER SYSTEM

OILY WASTE CONTROL

SYSTEM TYPE	OILY WATER SEPARATOR
MANUFACTURER	VILLAGE MARINE
FLOW RATE	___ GPM
HOLDING CAPACITY	___ GALLONS

C

C

B

B

A

A

16

15

14


13

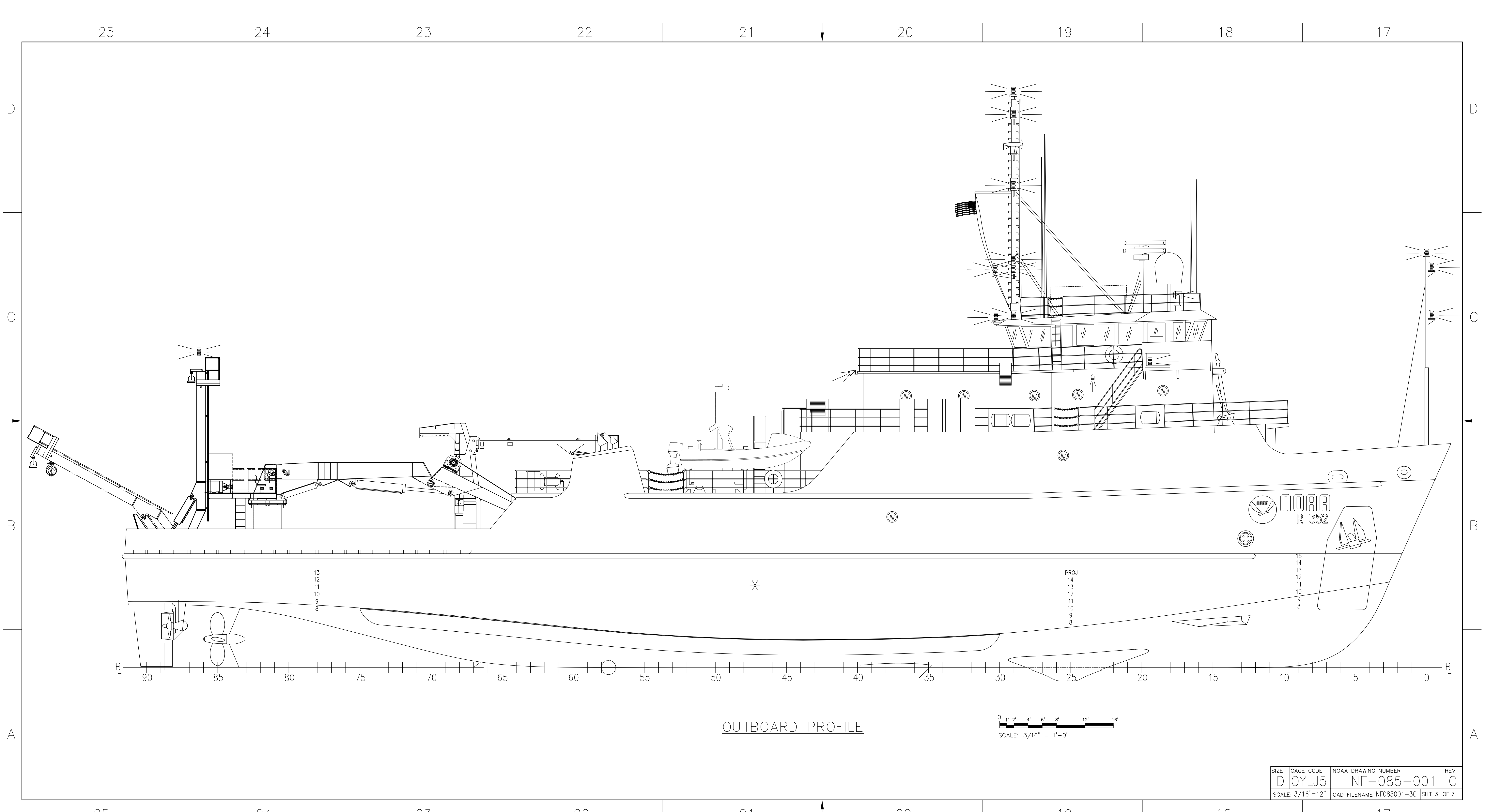
12

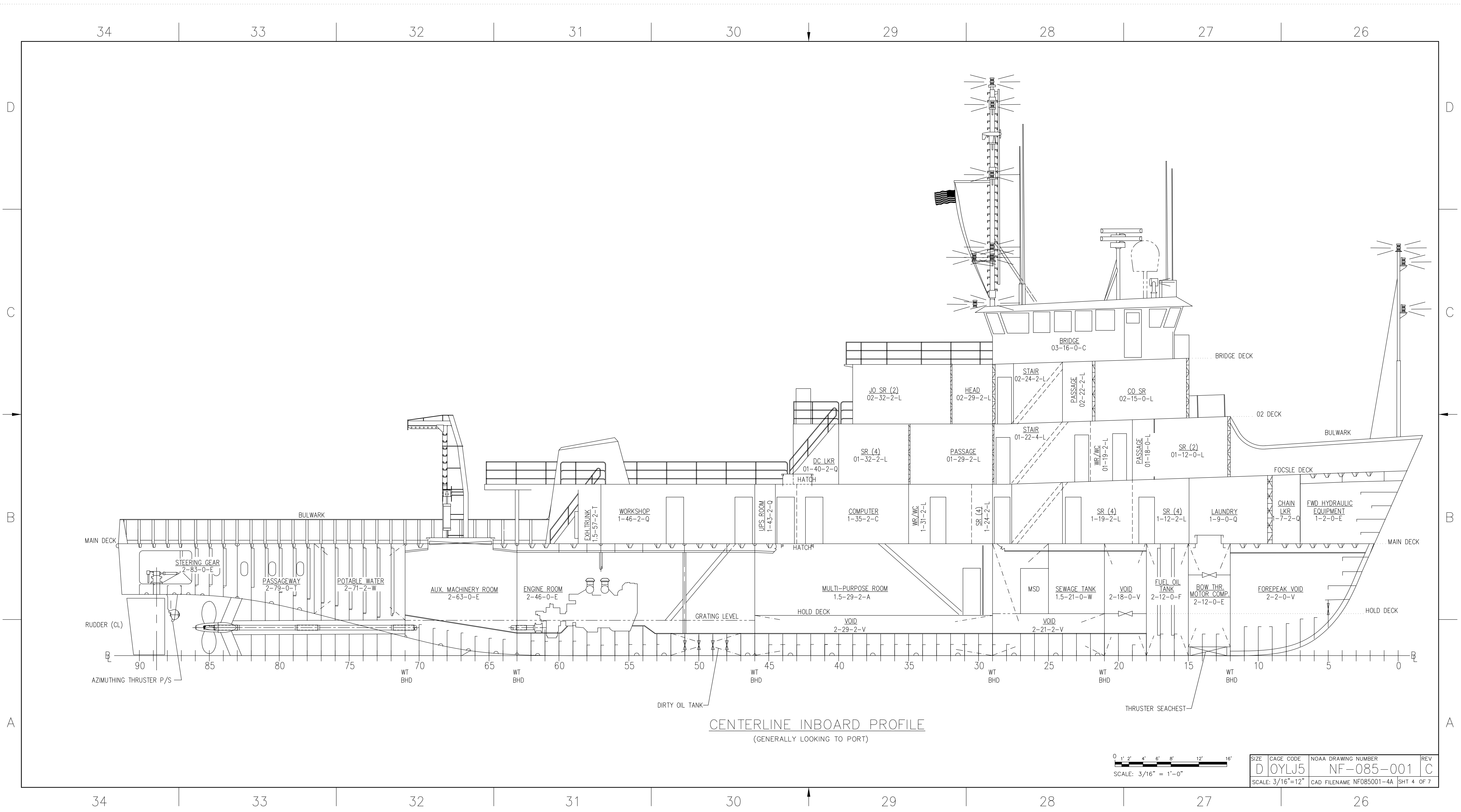
11

10

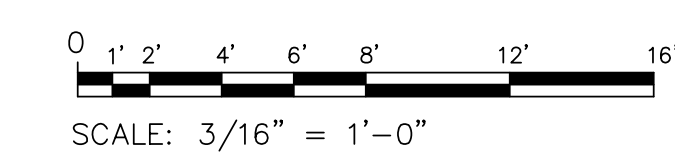
9

	PREPARED BY:	SIZE	CAGE CODE	NOAA DRAWING NUMBER	REV
	Seaworthy Systems, Inc.	D	OYLJ5	NF-085-001	B
	ESSEX, CT 06426	SCALE: AS SHOWN	CAD FILENAME NF085001-2A	SHT 2 OF 7	
	TEL: (860) 767-9061				

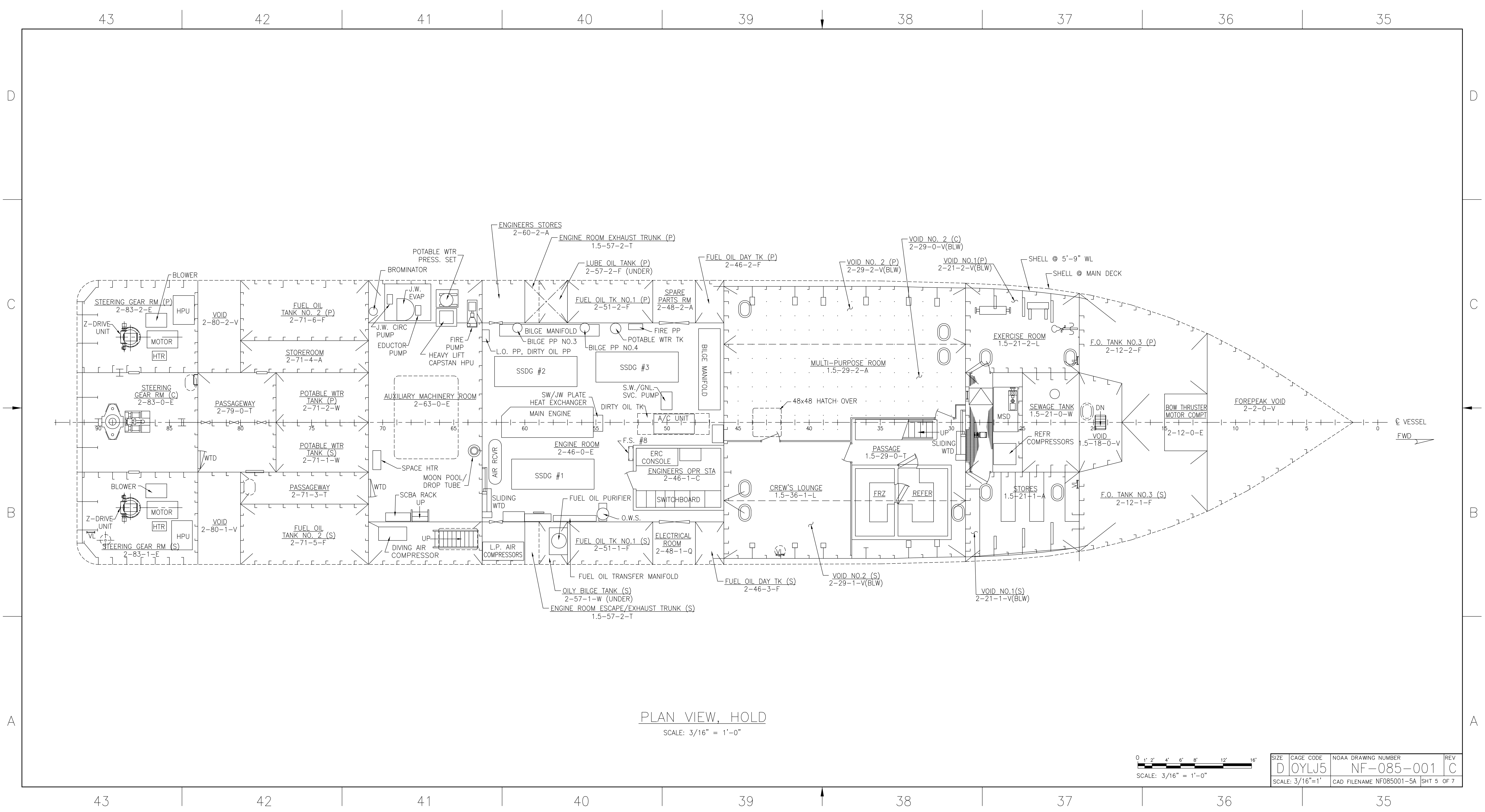




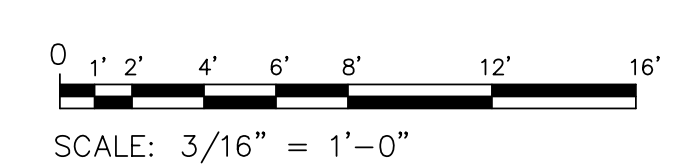
CENTERLINE INBOARD PROFILE
(GENERALLY LOOKING TO PORT)



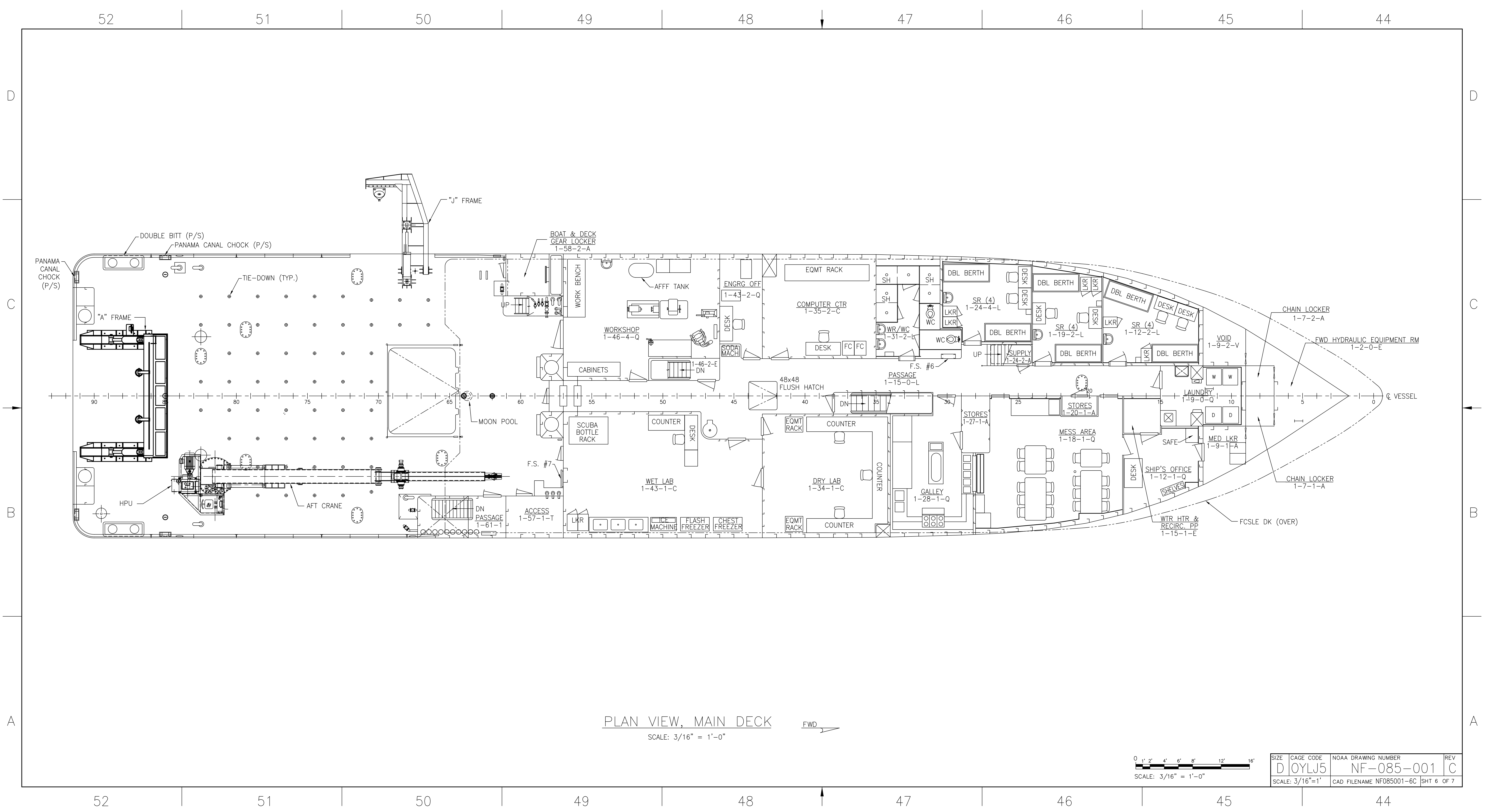
SIZE	CAGE CODE	NOAA DRAWING NUMBER	REV
D	0YLUJ5	NF-085-001	C
SCALE: 3/16"=12"			CAD FILENAME NF085001-4A SHT 4 OF 7



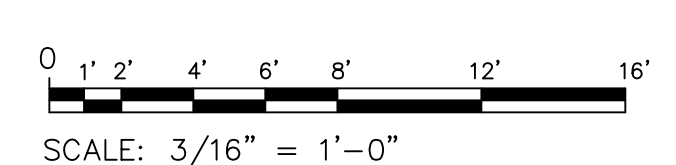
PLAN VIEW, HOLD
SCALE: 3/16" = 1'-0"



SIZE	CAGE CODE	NOAA DRAWING NUMBER	REV
D	OYLJ5	NF-085-001	C
SCALE: 3/16"=1'		CAD FILENAME NF085001-5A	SHT 5 OF 7



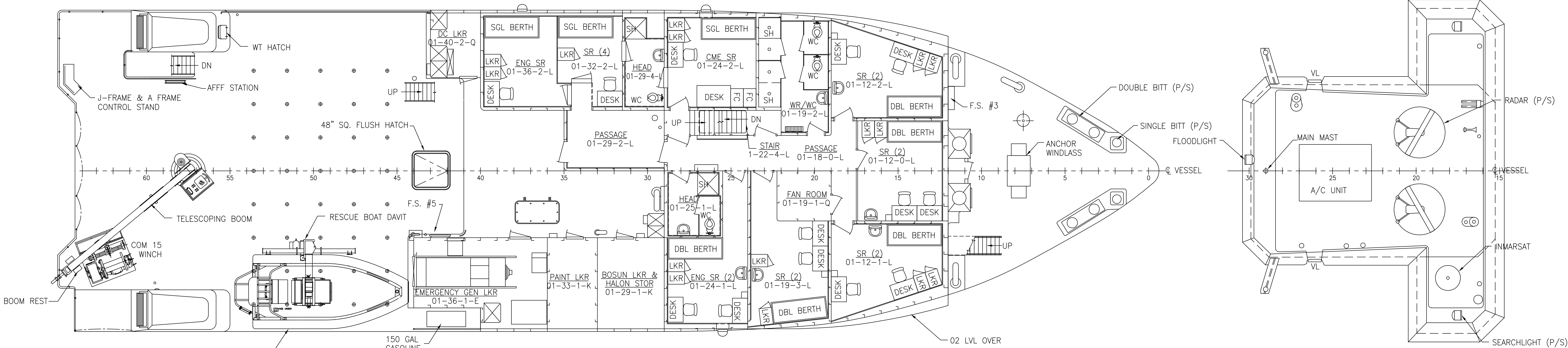
PLAN VIEW, MAIN DECK
SCALE: 3/16" = 1'-0" FWD →



SIZE	CAGE CODE	NOAA DRAWING NUMBER	REV
D	0YLUJ5	NF-085-001	C
SCALE: 3/16"=1'		CAD FILENAME NF085001-6C	SHT 6 OF 7

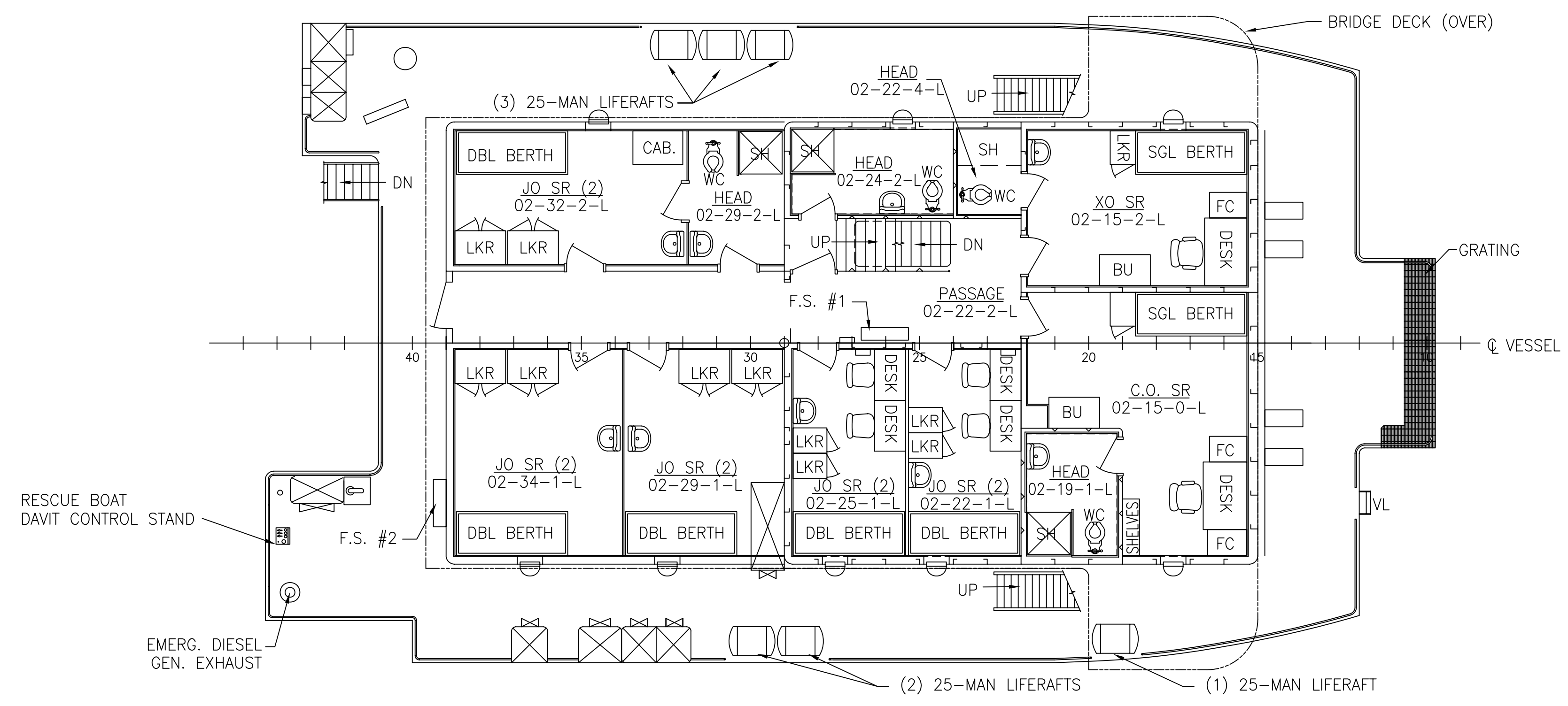
61 60 59 58 57 56 55 54 53

D
C
B
A

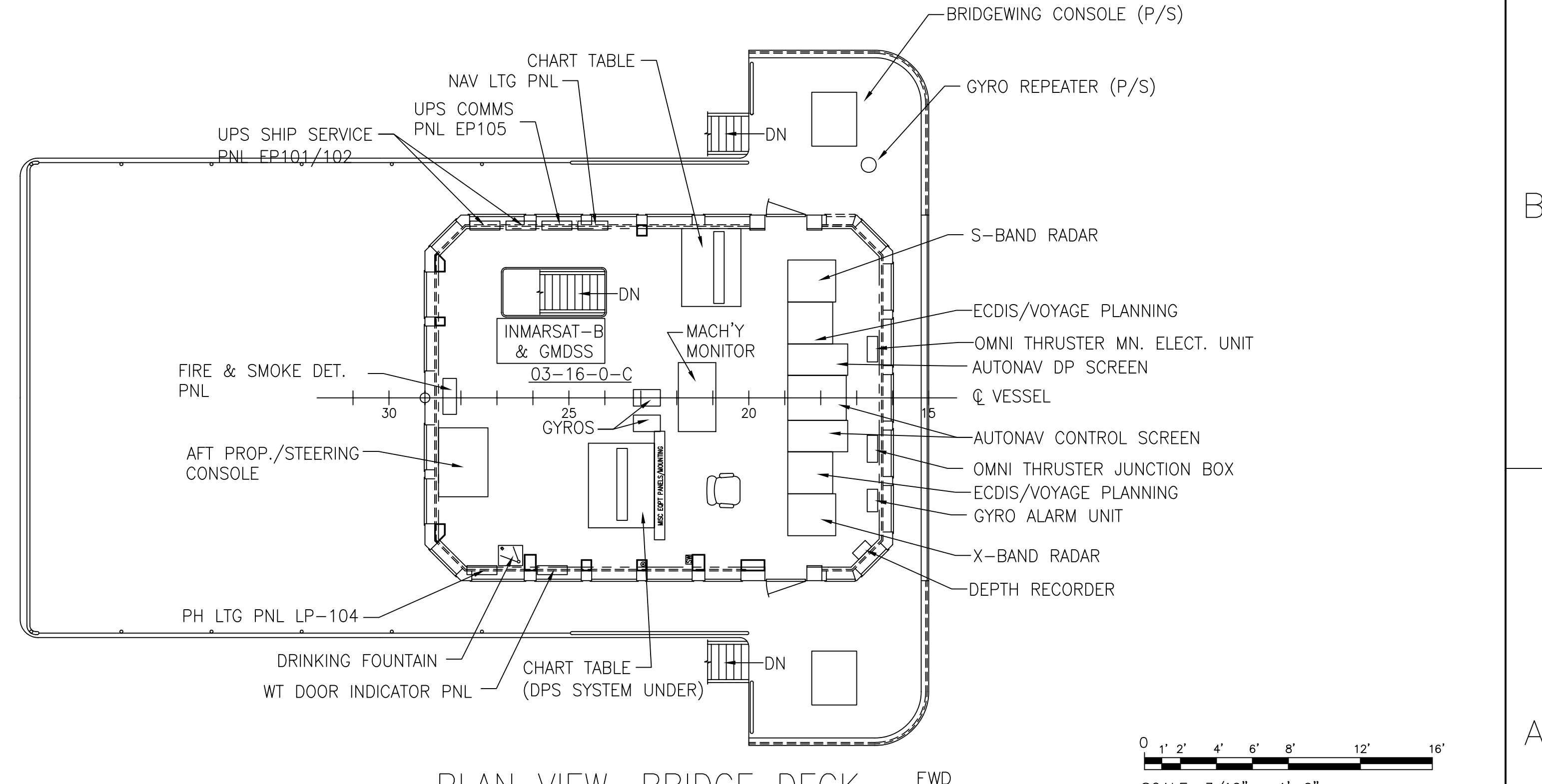


PLAN VIEW, FOC'SLE DECK
SCALE: 3/16" = 1'-0"

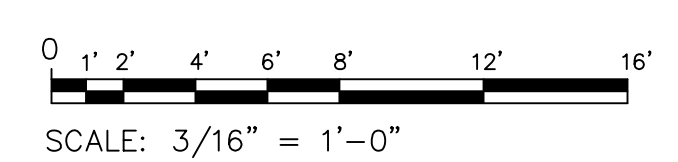
PLAN VIEW, PILOT HOUSE TOP
SCALE: 3/16" = 1'-0"



PLAN VIEW, 02 DECK
SCALE: 3/16" = 1'-0"



PLAN VIEW, BRIDGE DECK
SCALE: 3/16" = 1'-0"



SIZE	CAGE CODE	NOAA DRAWING NUMBER	REV
D	OYLJ5	NF-085-001	C
SCALE: 3/16"=1'		CAD FILENAME NF085001-7A	SHT 7 OF 7

61 60 59 58 57 56 55 54 53