



NASA Fire Services Contract (NFSC)



Virtual Pre-Solicitation Conference May 13, 2021

NOT EXPORT CONTROLLED

This document has been reviewed by the KSC Export Control Office and it has been determined that it does not meet the criteria for control under the International Traffic in Arms Regulations (ITAR) or Export Administration Regulation (EAR).

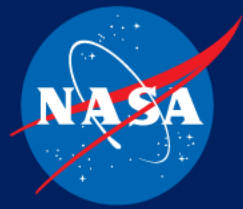
NASA KSC Export Control Office, (321) 867-9209



Agenda



- Introduction
- Draft RFP
- Office of Protective Services Overview
- NFSC Requirements Overview
- Location-Specific Information
- Conclusion



Questions



- Questions will not be addressed during this presentation and all attendees will be muted
- Questions should be emailed to KSC-NFSC-Info@mail.nasa.gov by 4:30 p.m. Eastern Time May 20, 2021
- Government responses to questions will be posted at <https://beta.SAM.gov>



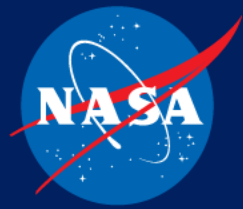
Introduction



Purpose: Provide potential offerors an increased understanding of the acquisition requirements and introduce the locations for the NFSC acquisition.

THIS BRIEFING IS FOR INFORMATION PURPOSES ONLY

- The information presented today shall not be construed as a commitment by the Government or a comprehensive description of any future requirements.
- Audio recording of this presentation is not authorized. Presentation slides will be posted at <https://beta.SAM.gov>.
- The information provided in today's presentation reflects the current requirements. No solicitation exist at this time.
- This presentation will not address every element of the Draft Request for Proposal (DRFP). Prospective offerors can access the DRFP at <https://beta.SAM.gov>.
- Potential Offerors are encouraged to periodically monitor <https://beta.SAM.gov> for updates to this acquisition.

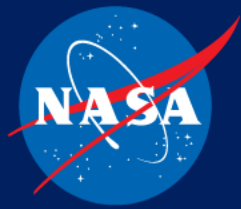


NFSC Requirements Overview

The purpose of the NFSC is to acquire fire services at

- Wallops Flight Facility (WFF)
- Ames Research Center (ARC)
- Kennedy Space Center (KSC)
- White Sands Test Facility (WSTF)
- Stennis Space Center (SSC)

Fire services requirements include fire operations and fire fighting, emergency medical services-paramedic (advanced life support), fire protection, fire prevention inspection program, fire services training, and fire investigations. Refer to location annexes for specifics.



NFSC Requirements Overview

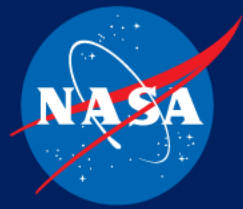


The NFSC is a single award, firm-fixed price competitive 8(a) set-aside acquisition.

The contract will have a total potential period of performance of 7 years, 10 months as follows:

Base Period: December 1, 2021, through September 30, 2023
Option Period 1: October 1, 2023, through September 30, 2024
Option Period 2: October 1, 2024, through September 30, 2025
Option Period 3: October 1, 2025, through September 30, 2026
Option Period 4: October 1, 2026, through September 30, 2027
Option Period 5: October 1, 2027, through September 30, 2028
Option Period 6: October 1, 2028, through September 30, 2029

The Phase-In Period for each location is 60 days



NFSC Requirements Overview



- A "Secret" Facility Clearance Level is required at the time of proposal submission.
- The NFSC acquisition website has been activated and can be accessed at <https://procurement.ksc.nasa.gov/nfsc>. The website provides prospective offerors access to a library of technical documents applicable to this acquisition.



NFSC Preliminary Schedule



- DRFP Comments: Due by 4:30 p.m. on May 20, 2021
- Issue Solicitation: On or about June 7, 2021
- Proposals Due: On or about July 6, 2021
- Award of Contract: On or about September 30, 2021
- Start of Performance: On or about December 1, 2021

NASA Fire Services Contract (NFSC)





Office of Protective Services

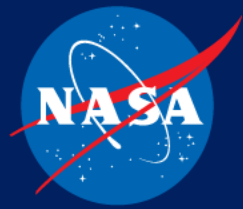


Mission Statement

The Office of Protective Services serves as the focal point for policy information, oversight, coordination and management of the Agency and provides emergency management, security, and fire operations, fire prevention and fire protection support for all NASA Centers and locations and ensures the safety and security of all employees, partners, tenants, and visitors along with its missions, facilities, property, and information that are in its possession or under its control, consistent with all applicable laws, national level directives, and Agency requirements. [Fire Services is the focal point of this presentation.]



NASA Fire Services Contract (NFSC)



Fire Rescue Services

Fire Response



Fire crews are trained and combat skilled in the following:

- Structural firefighting
- Aircraft Rescue Firefighting (ARFF)
- Urban rural interface firefighting
- Exotic fuels firefighting (propellants)
- HAZMAT
- Technical rescue
- Wildland fire fighting (at ARC/WFF)
- Crew rescue (at KSC)





Fire Rescue Services

Emergency Medical Response



- Basic Life Support (BLS)
- Advanced Life Support (ALS)
- Firefighter/EMTs/Paramedics transport is provided to all area hospitals via fire rescue services ambulances





Fire Prevention Services



The Fire Prevention Program provides:

- Facility inspections
- Hazardous operation walk-downs
- Fire extinguisher inspection and maintenance
- Issue of hot work permits:
 - Tar kettle operation
 - Torch down roof operations
 - General: welding, grinding, cutting, open flames
- Hood and duct inspections
- Fire investigation
- Facility evacuation drills



Fire Protection Services



Fire Protection Program provides the following:

- All facility design reviews
- Fire risk analysis
- Fire risk surveys
- Final acceptance testing
- Fire system listing
- Fire hydrant flow testing and marking
- Fire Protection Deficiency Abatement Program





Fire Rescue Services Wallops Flight Facility (WFF)



***Navy/Surface Combat
Systems Center***



NOAA



***Mid-Atlantic
Regional Spaceport***



***Naval Air Warfare Center
(Patuxent River)***



U. S. Coast Guard



Fire Rescue Services WFF



Three Major Parcels 6000 Acres

Wallops Main Base 1900 Acres

- Administrative and Technical Offices
- Tracking and Data Acquisition
- Range Control Center
- Ordnance Storage/Processing
- R&D, Processing Facilities
- Research Airport
- Navy Administration/Housing
- Coast Guard Housing

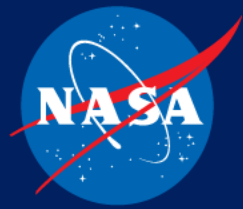
Wallops Island 3000 Acres

- Launch Sites
- Blockhouses
- Radar
- Processing Facilities
- Dynamic Spin Balance
- Navy Operational Facilities

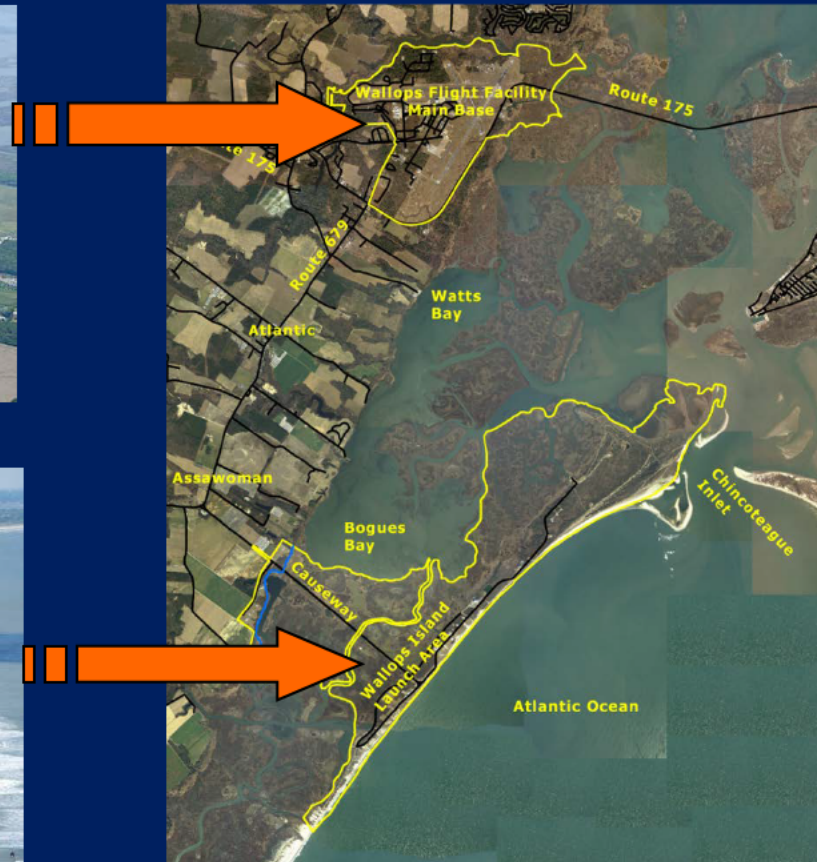
Wallops Mainland 100 Acres

- Tracking & Data Acquisition

Marshland 1000 Acres



Fire Rescue Services WFF Covers 6,000 Acres

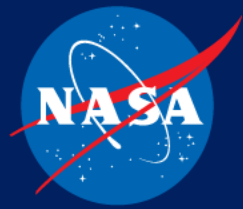




Ames Research Center (ARC)



NASA Fire Services Contract (NFSC)



ARC



Land

- ~1,916 acres (3 square miles)

Infrastructure

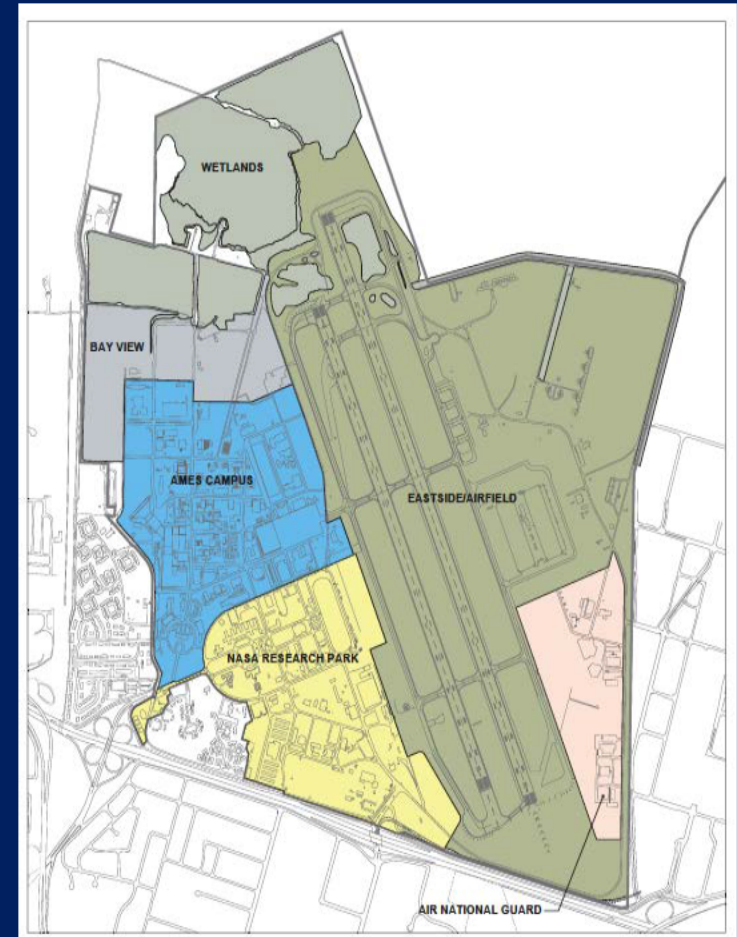
- Over 261 Facilities
 - 5,449,527 square footage of building area
- Ames Campus 122 Bldgs.
- NASA Research Park (NRP): 112 Bldgs.
- Moffett Federal Airfield: 27 Bldgs.
(not including CA Air National Guard)

People

- ~3,000 NASA Employees
- ~50 Tenants
 - Federal, Military, Academia, Commercial
- Westcoast Housing

Future Construction in NRP

- ~2,000 public housing units
- UC Berkeley satellite campus
 - Dorms, Labs, Classrooms





ARC



Core Areas of Research Expertise

- Entry Systems • Advanced Computing and IT Systems • Aerosciences
Air Traffic Management • Astrobiology and Life Sciences
Intelligent/Adaptive Systems • Space and Earth Science
Cost-effective Space Missions

Unique Research Facilities

- Wind Tunnels • Vertical Motion Simulator • Flight Control Tower Simulator
• Super Computing Facility • ArcJet • Laboratories





Kennedy Space Center (KSC)

NASA's Premier Spaceport



Land

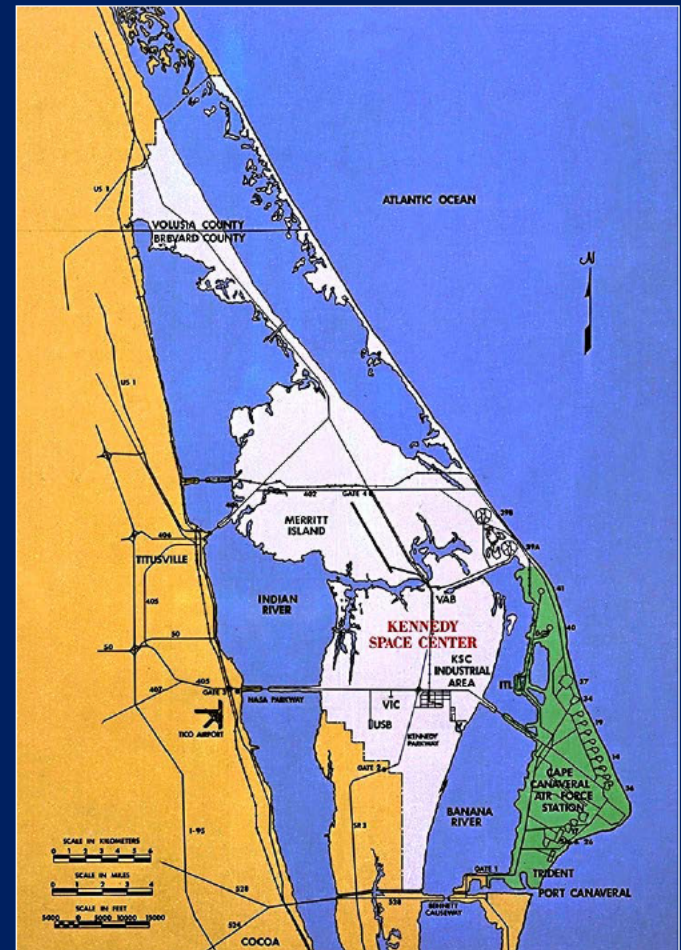
- 140,000 acres (218 square miles)
- 70,000 acres of estuary deemed a system of National importance

Infrastructure

- Over 900 facilities/7.6 million square feet of building area
- 3 Launch pads
- 3 Fire stations
- 1 Medical facility
- 213 Miles of roadway
- 5 Major bridges

People

- 10K employees per day; three shifts (civil servants, contractors and partners)
- Approximately 1.6 million visitors per year attend the KSC Visitor's Center



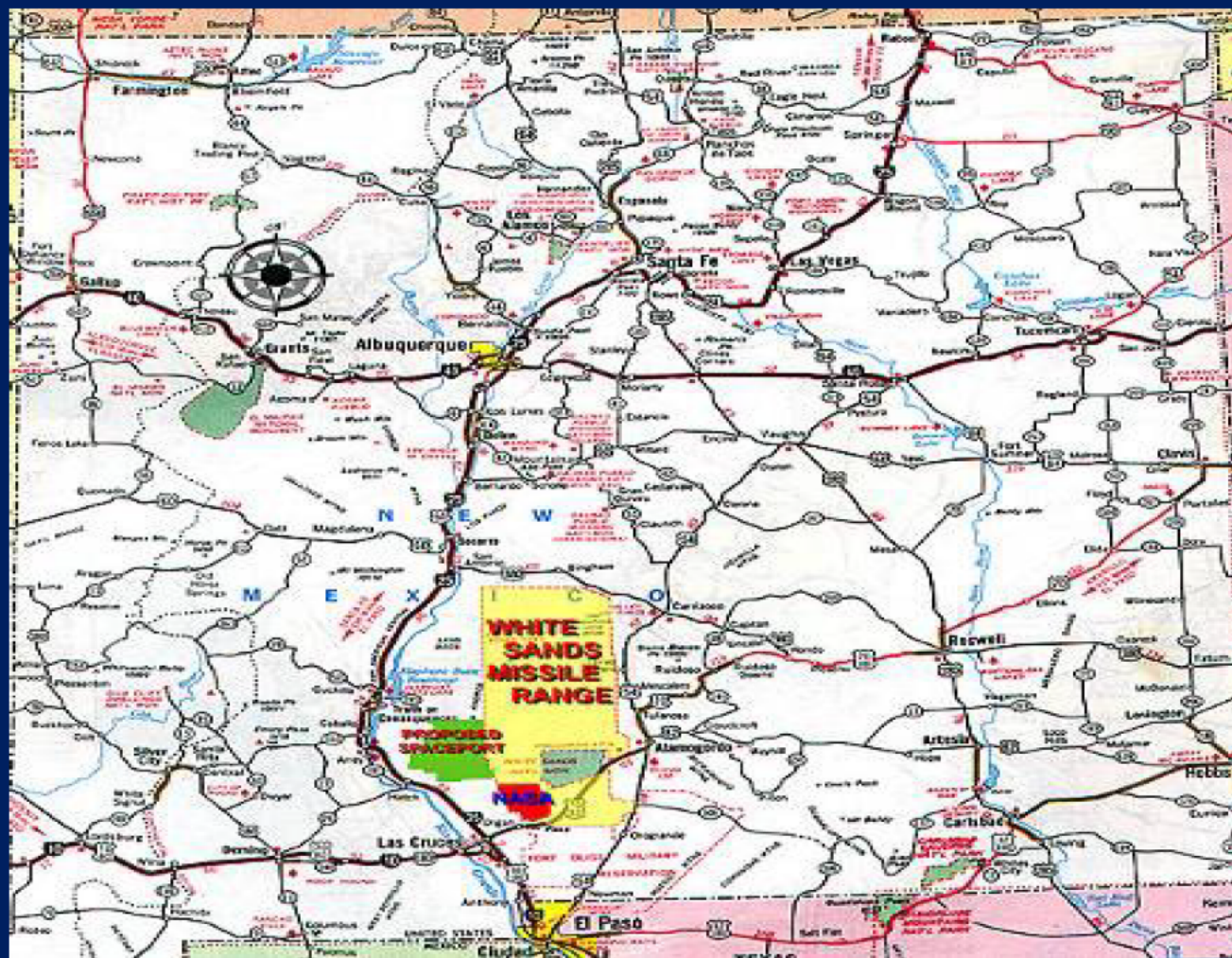


White Sands Test Facility (WSTF)



Located in South Central NM near Las Cruces; 45 miles north of El Paso, Texas and 45.1 miles from Juarez, Mexico.

NASA White Sands is made up of two NASA facilities, the JSC WSTF and the Goddard White Sands Complex (WSC).





WSTF



WSTF Western
Perimeter Patrol Area



WSTF Hazardous
Test Areas

WSTF Admin Area

Forward Gate

WSTF Main Access Road
approx. 7 miles from Hwy
70 to Admin area



WSTF



- Rocket engine system test stands with vacuum
- Long-duration large altitude simulation system
- Full-scale hypergolic and cryogenic propulsion test systems
- Chemistry and metallurgical laboratories
- Flight component repair, refurbishment and test facilities



WSTF



- Constructed in 1962-64 to support Apollo Project
- Subsidiary Unit of NASA Johnson Space Center
- Occupies ~40 square miles of the SW corner of White Sands Missile Range
- ~ 65 NASA and ~ 550 contractor personnel
- Large buffer zone and controlled remote property for hazardous testing
- Moderate desert climate ideal for year-round testing
- Existing environmental permits in place for hazardous testing



Stennis Space Center (SSC)



"I don't know yet what method we will use to get to the moon, but I do know that we have to go through Mississippi to get there!"

Dr. Wernher Von Braun

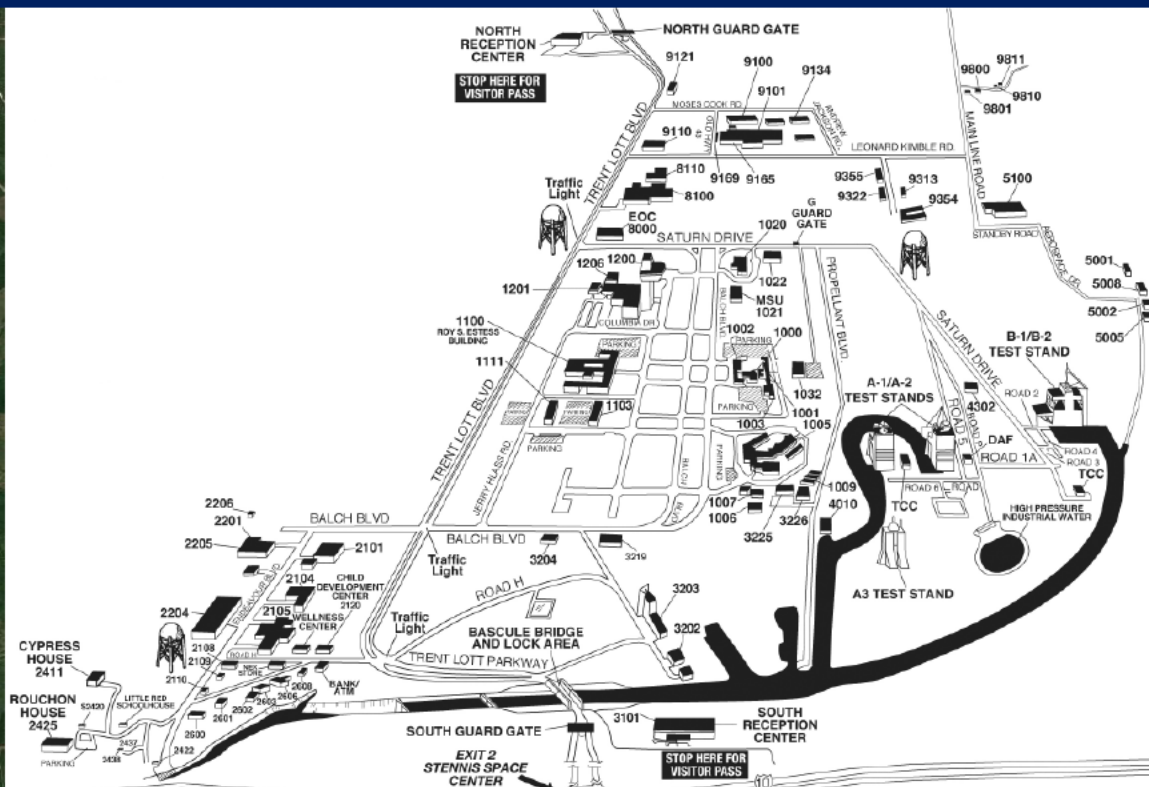
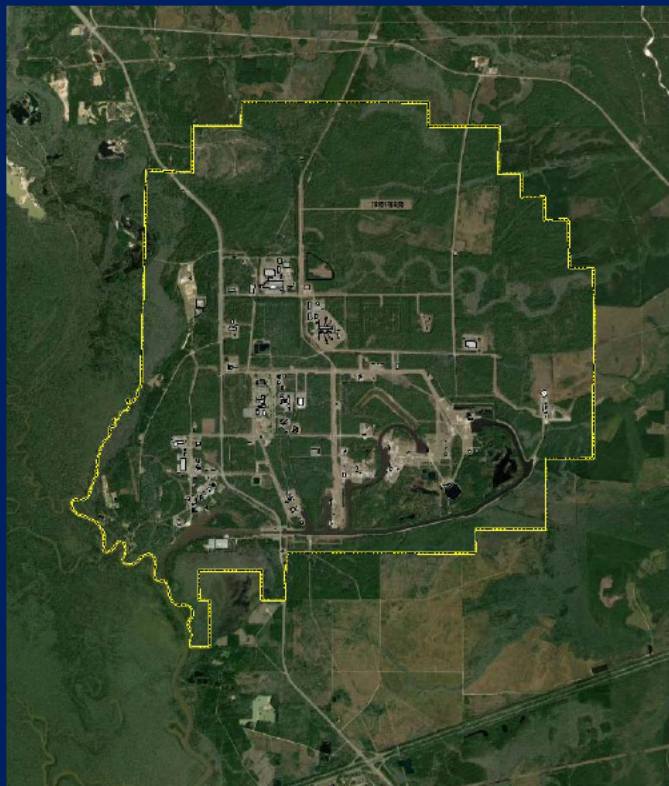
- SSC is America's largest rocket testing facility.
- 40 Federal Agencies
- 5,000+ personnel at SSC
- ± 70% are other Agencies or tenants
- Main area of responsibility - 13,800 acres
- Buffer zone - 125,000 acres



SSC



SSC is located just inside the Louisiana Mississippi state line with I-10 on the south and I-59 on the north.





SSC Contractor and Tenant Organizations



Department of Commerce

- National Oceanic & Atmospheric Administration (NOAA)
- National Weather Services (NWS)
- National Data Buoy Center
- NOAA National Marine Fisheries Service
- NOAA National Center for Environmental Information (NCEI)
- NOAA Navigation Response Team-1

Department of Homeland Security

- DHS Data Center 1
- Immigration & Customs Enforcement (ICE)
- United States Citizenship & Immigration Services (USCIS)

Department of Interior

- U.S. Geological Survey (USGS)
- Hydrologic Instrumentation Facility

Department of Defense

- Army Corps of Engineers
- Commander, Naval Meteorology & Oceanography Command (CNMOC)
- Navy Detachment Stennis
- Naval Oceanographic Office (NAVO)
- Navy Office of Civilian Human Resources
- Naval Research Laboratory (NRL)
- Navy Small Craft Instruction and Technical Training School (NAVSCIATTS)
- Navy Special Boat Team 22 (SBT-22)
- Naval Special Warfare Center (NSWC)



SSC Contractor and Tenant Organizations Continued



Commercial Companies

- Aerojet Rocketdyne
- Lockheed Martin
- Rolls Royce North America

State of Mississippi

- Mississippi Enterprise for Technology (MSET)
- Marine Industries Science & Technology (MIST) Cluster

Center for Higher Learning

- Mississippi State University
- Pearl River Community College
- University of Mississippi
- University of New Orleans
- University of Southern Mississippi

Mississippi State University

- Northern Gulf Institute
- ASSURE FAA UAS Center of Excellence

Government Publishing Office

- Passport Production Facility



Conclusion



Conference attendees should email questions to KSC-NFSC-Info@mail.nasa.gov by May 20, 2021, at 4:30 p.m. Eastern Time.

Government responses to questions will be posted at <https://beta.SAM.gov>.

This presentation will be posted at <https://beta.SAM.gov>.