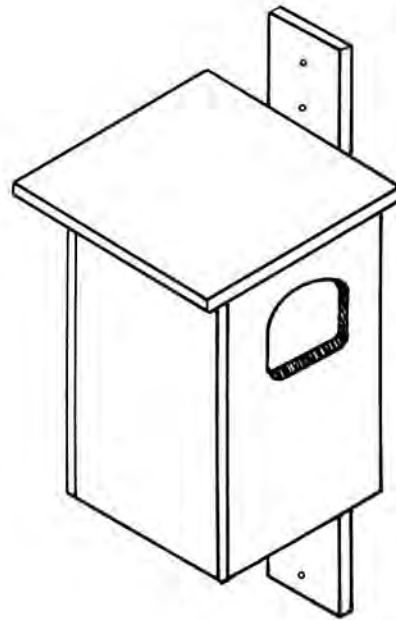
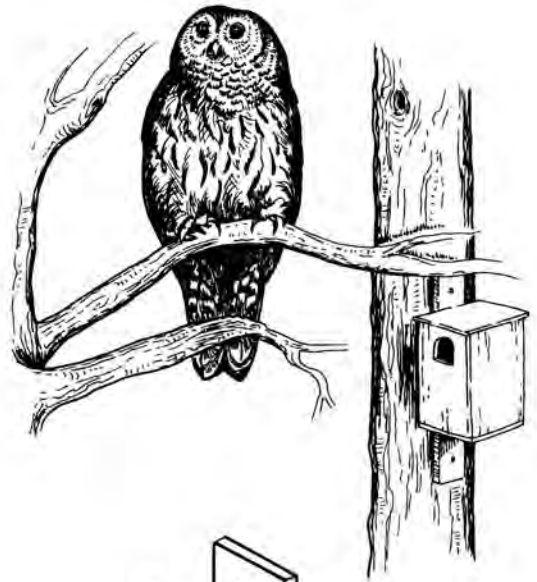
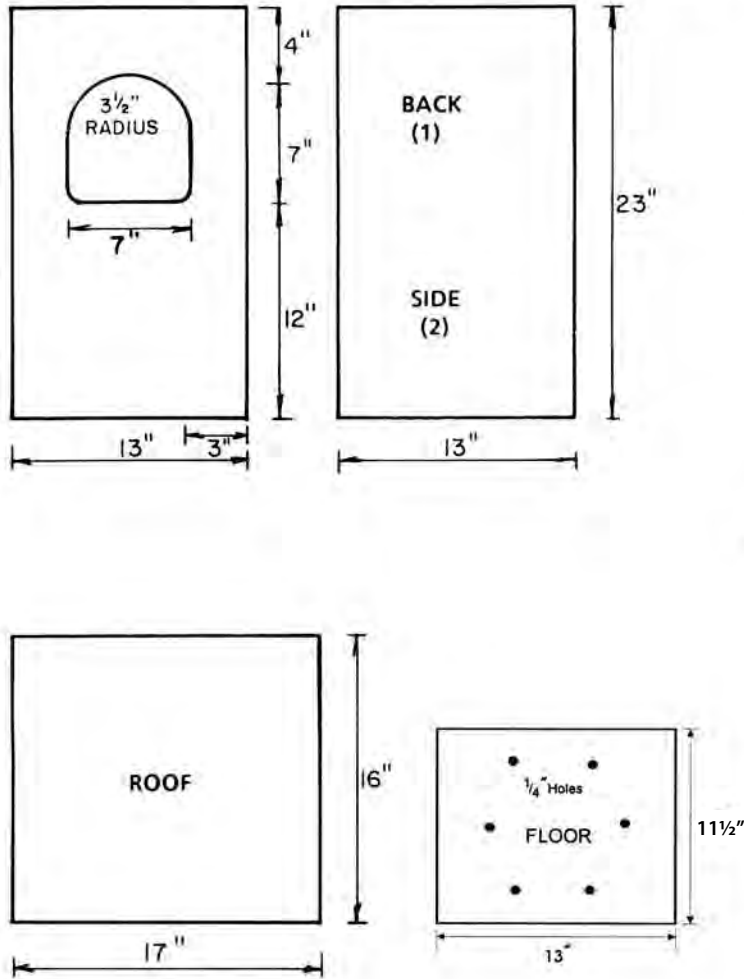
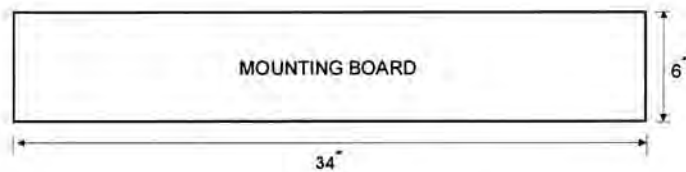


Barred Owl Box Plan

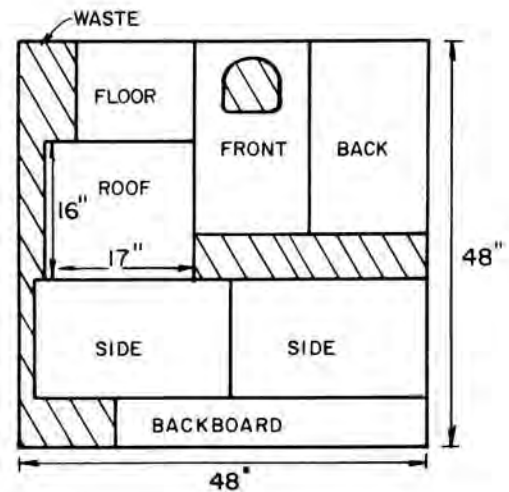
NOTE: No hinged door needed
Clean through entrance hole



Place wood chips in bottom of box.



LUMBER: One 4' x 4' x 3/4" sheet exterior plywood

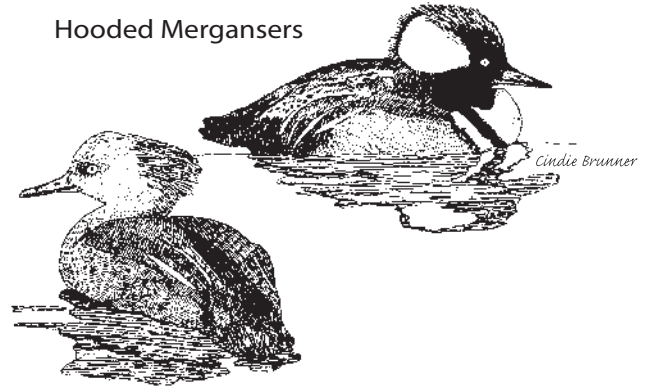


Nest Box

Wood Duck, Hooded Merganser, Common and Barrow's Goldeneyes

Note: Entrance hole (a horizontal oval) is 4" x 3" for Wood Duck and Hooded Merganser, 4 1/4" x 3 1/4" for Common Goldeneye, and 5" x 4" for Barrow's Goldeneye.

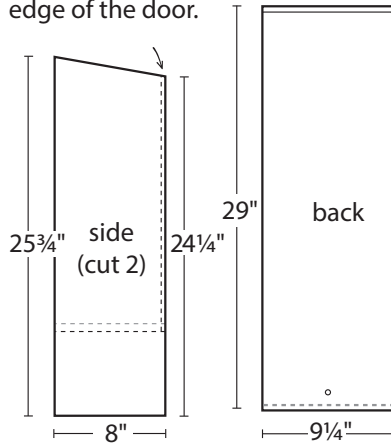
Hooded Mergansers



To make swing-up door, on one side make a 45° cut 6" from the bottom and trim 1/8" from long edge of the door.

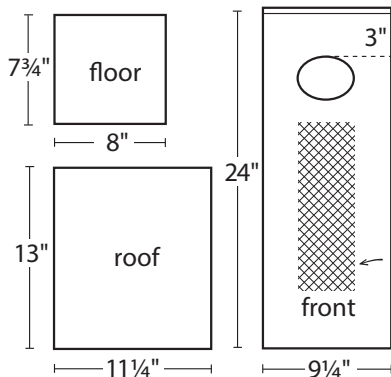
Cut top edge at a 15° angle.

Side view of 15° angle cut.



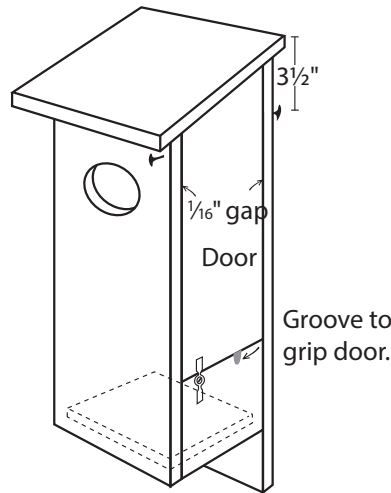
Cut top edge at a 15° angle.

Side view of 15° angle cut.



Attach 4" x 12" piece of 1/4" mesh hardware cloth.

Completed Box



Roof should overhang house 3/4" in the back and 1" along the sides. Recess the floor 1/2" up.

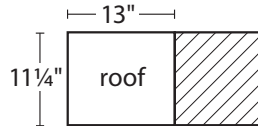
Increase Your Chances of Nest Box Success!

Information on natural history, habitat, nest box placement, and management for Midwestern birds is available in *Woodworking for Wildlife*. Order at minnesotasbookstore.com



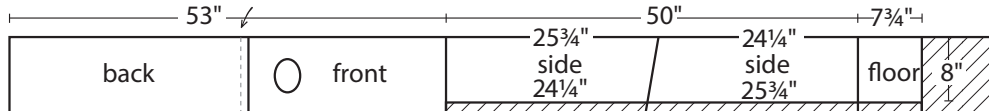
Construct house with rough surface facing out. One side will be smooth unless you're making multiple houses and you alternate the direction of your cross cut.

Lumber: 1" x 12" x 2'



Have rough side up when cutting the 15° angle cut.

Lumber: 1" x 10" x 10'



©2009 State of Minnesota, Department of Natural Resources

The **Cornell** Lab
NestWatch

Report your nesting birds to
NestWatch.org

American Kestrel, Screech-Owl, Northern Saw-whet Owl, Boreal Owl, Bufflehead

SUPPLIES NEEDED:

Use raw pine or cedar. Do not paint or treat with a wood preservative.

An outside perch is not necessary and may attract other species to the box.

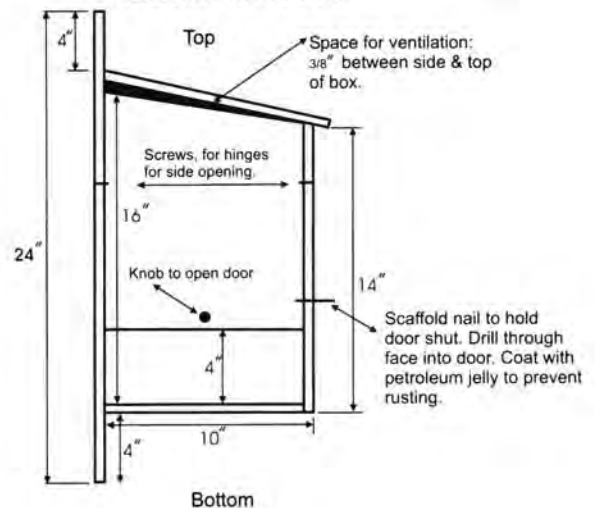
Use 1-5/8" galvanized deck screws for the box.

You can place a perch inside (using cutout from entrance) about three inches below entrance hole.

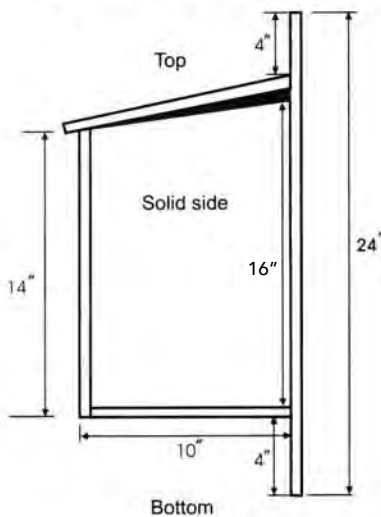
Place 2" of coarse wood shavings (not sawdust) in bottom of box, each year before nesting season.



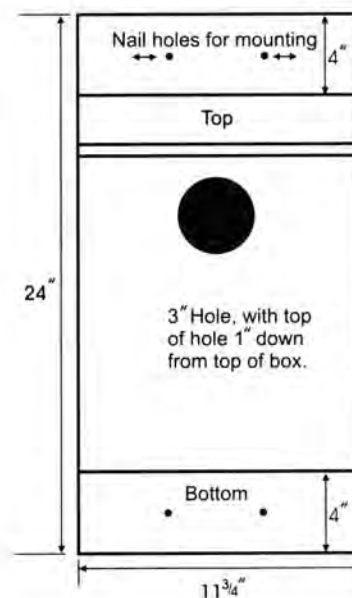
SIDE VIEW WITH DOOR



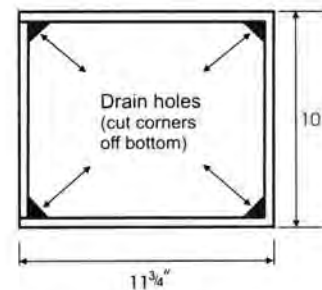
SIDE VIEW OTHER SIDE OF BOX



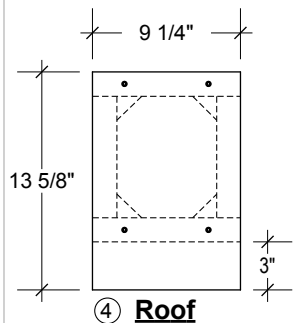
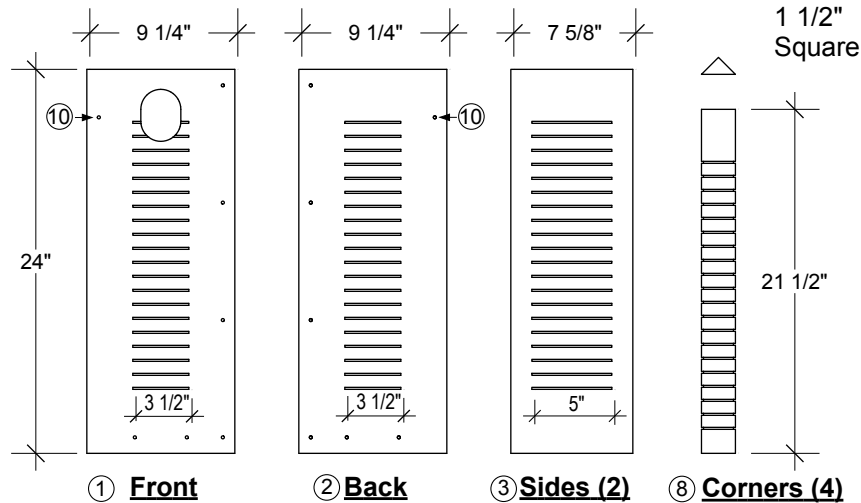
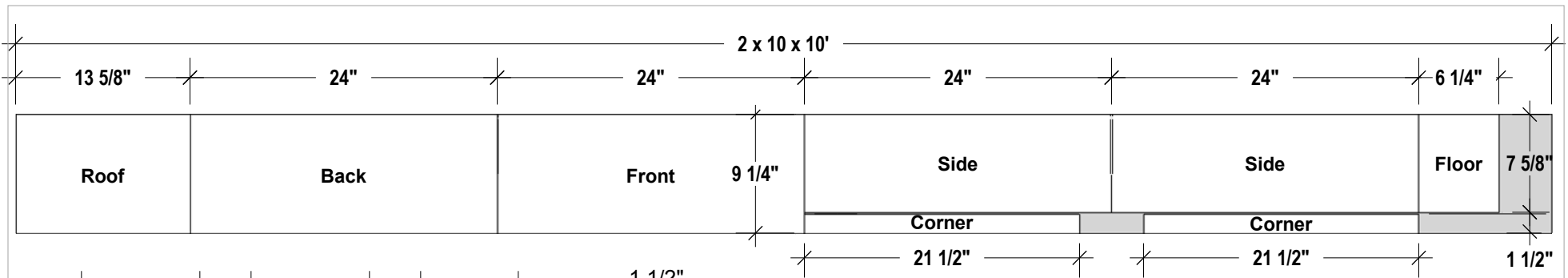
FRONT VIEW OF BOX



BOTTOM OF BOX

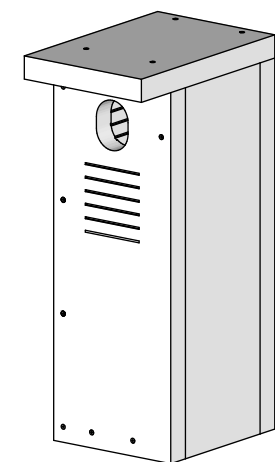
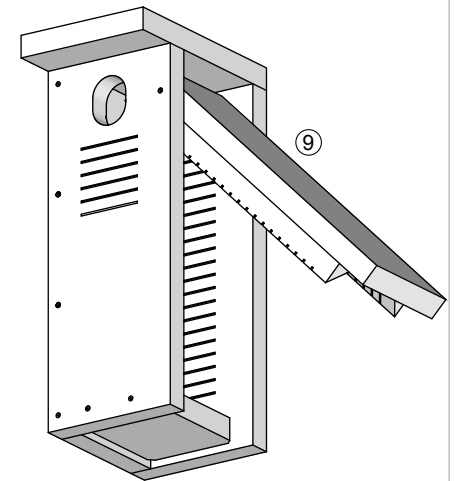
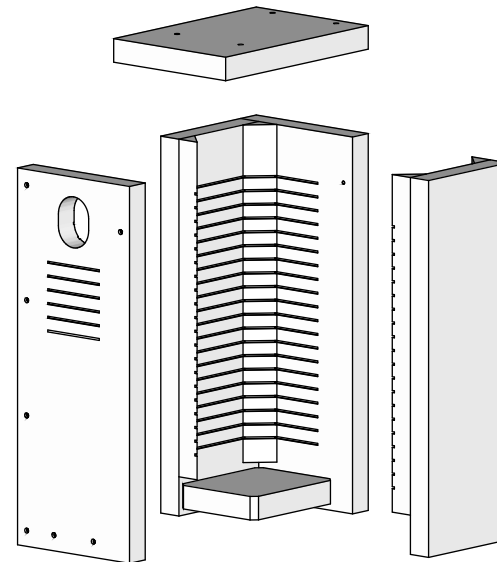


Bottom is inset into sides of box.



Materials

- (1) 2 x 10 x 10' (1 1/2" x 9 1/4" x 120")
- (18) #8 x 3" deck screws
- (20) #6d or 7d finish nails (2" - 2 1/4")



To inspect box while occupied, remove three top roof screws and swing top around fourth screw to open.

Round edges of entrance hole using rasp so that it's rough for toe holds.

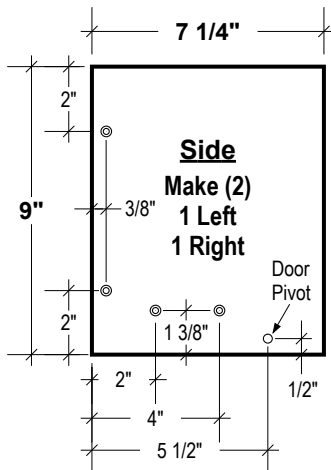
- ① Front: 2 x 10 x 24"
- ② Back: 2 x 10 x 24"
- ③ Sides (2): 1 1/2" x 7 5/8" x 24". One side pivots open for cleaning
- ④ Roof - 1 1/2" x 10" x 13 5/8" (3" overhang)

- ⑤ Floor: 1 1/2" x 6 1/4" x 7 5/8"
- ⑥ Entry: 2 1/2" wide x 3 1/4" high. One inch below roof
- ⑦ Kerfs (foot holds) - 1/2" to 3/4" between cuts, 1/4" deep. 3" from roof and floor, and cut all around inside of box

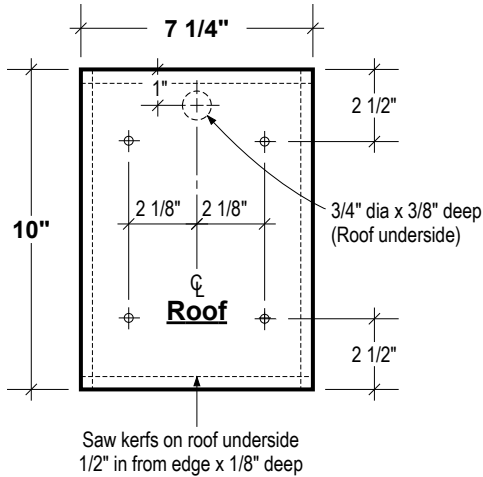
- ⑧ Corners (4): Flush with top of sides down. Nail into corners with finishing nails.
- ⑨ Hinge one side of box for cleaning and spring inspection. Loose nail lock near bottom.
- ⑩ Hinge screws 3" from roof.

The Bower Flicker Nestbox

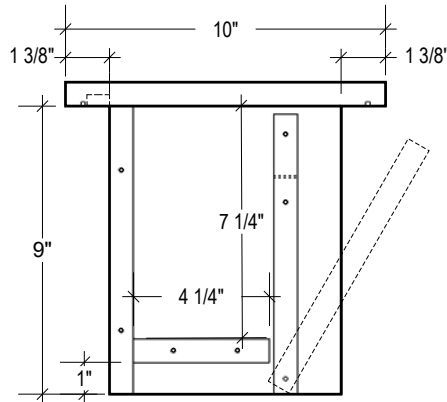
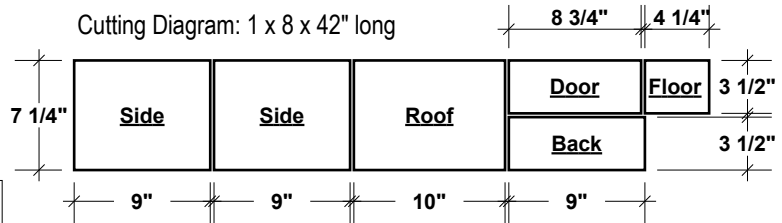
Redrawn April 1, 2015



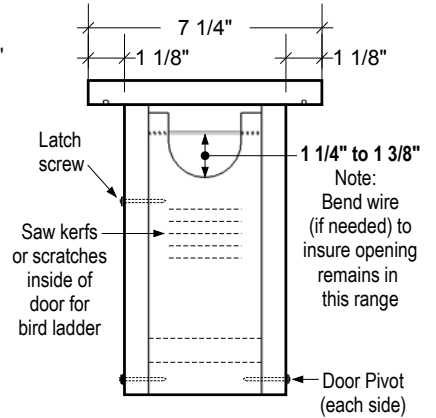
Note
For no table saw
fabrication, cut 3 1/2"
parts from 1 x 4



Cutting Diagram: 1 x 8 x 42" long

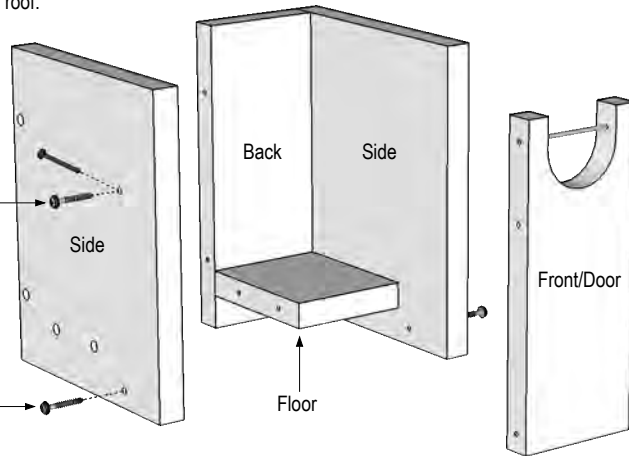


Side View

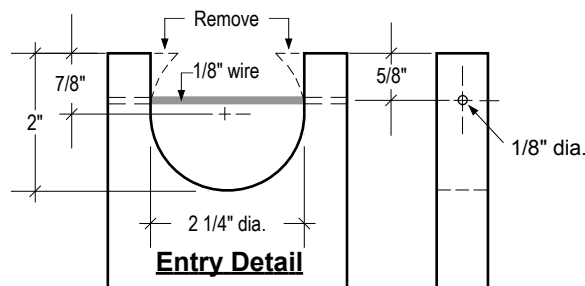
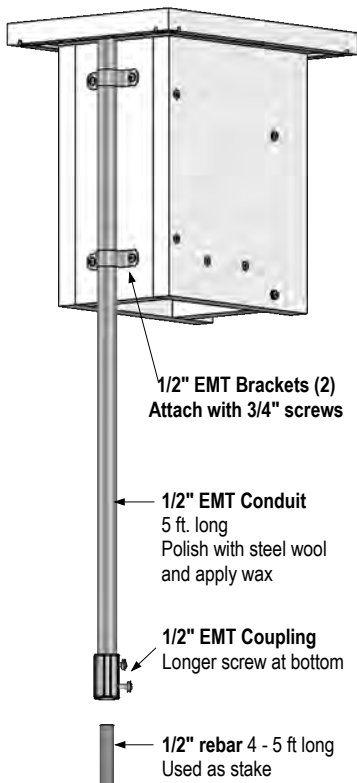


Front View

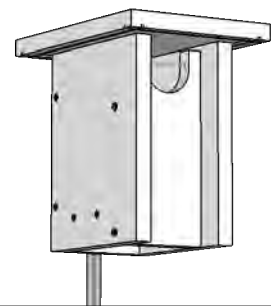
Apply caulk to top of
sides and to
top of back before
attaching roof.



Gilbertson Conduit/Rebar Mounting System



Entry Detail



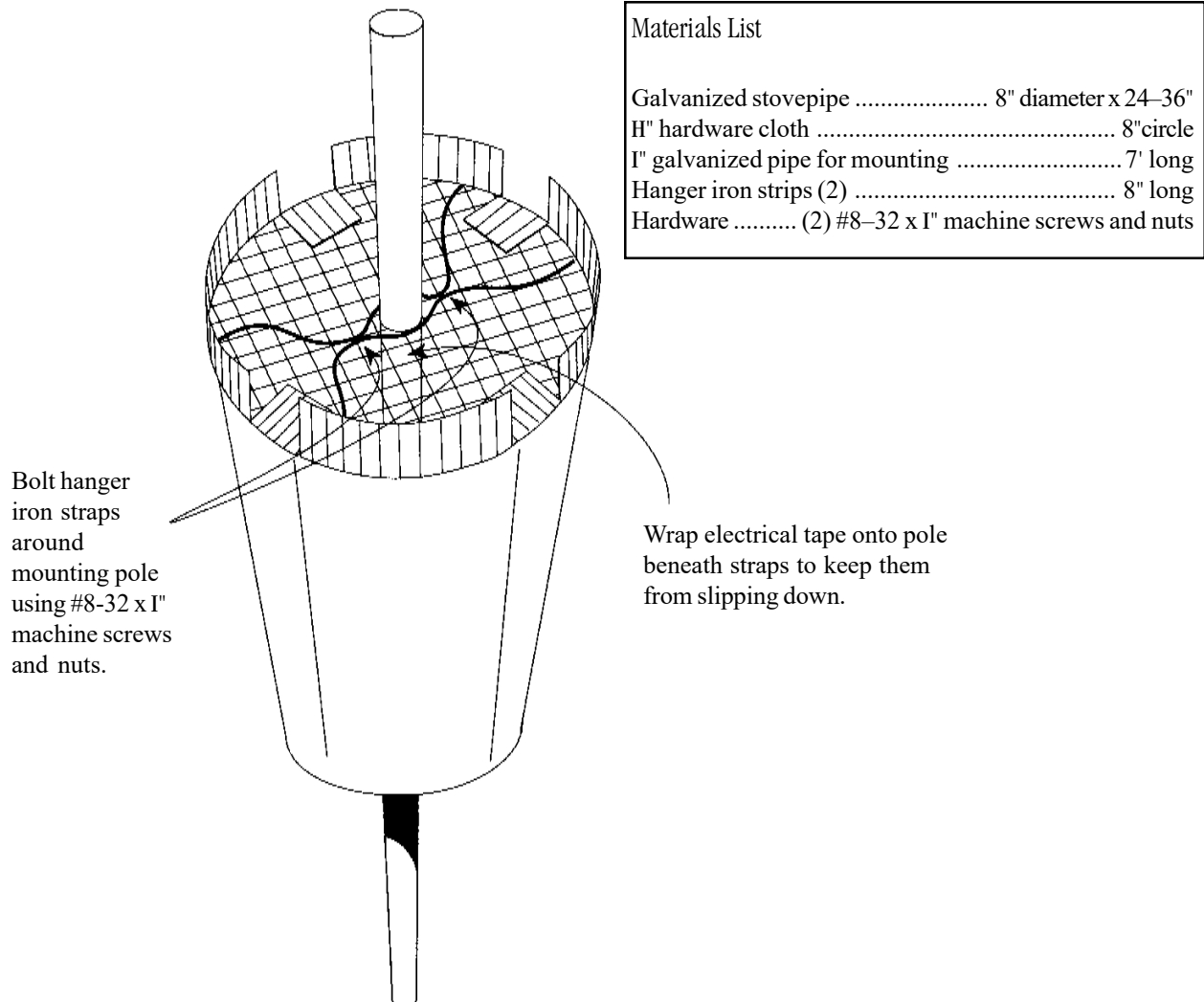
Quan	Material
42"	1 x 8 (3/4" x 7 1/4")
14	#8 x 1 5/8" exterior wood screws
1	#8 x 1 5/8" Latch screw (or nail)
3 1/2"	1/8" dia. wire (or nail) for entry
1	Conduit/Rebar Mounting System

Gilwood

Bluebird Nestbox

designed by Steve Gilbertson - Aitkin, Mn

A Plan for a Stovepipe Predator Baffle



Using tinsnips, shape hardware cloth into a circle. Make a small cut in the center so it will slip over the mounting pole. Bend the edges of the hardware cloth down and slide it snugly into the stovepipe. Cut four tabs on the top end of the stovepipe. Bend them inward, over the hardware cloth.

Bolt the hanger iron straps together in the center, around the mounting pole. Bend the free ends outward to support the hardware cloth. A few wraps of electrical tape below the strap attachment will keep it from slipping down the pole. Slide the stovepipe assembly over the top of the mounting pole, resting it on the hanger straps. Attach the nest box onto the pole, with the bottom of the box about six inches above the top of the baffle. Smear a heavy-duty wax (for example, carnauba wax) on the pole beneath the baffle to repel ants.

Printed with permission from *Bluebirds Forever* (Toops 1994)

Plan design by Ron Kingston, *Sialia* 13(2):56-57

Art reference from "Enjoying Bluebirds More" in *Bird Watcher's Digest* (1-800-879-2473)

Image courtesy of: The Birdhouse Network <http://birds.cornell.edu/birdhouse>

Copyright 2001 Cornell Lab of Ornithology